

G2150 Under Mount Push-to-Open Over Extension Slide

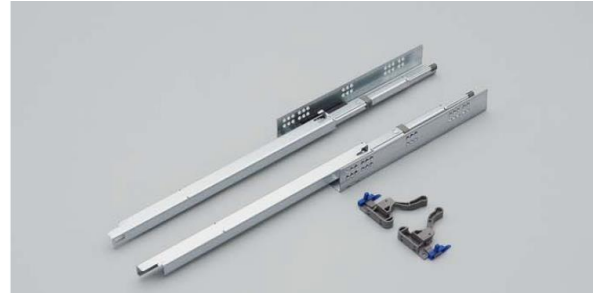
Max load 40kg · Push-to-open · Holds closed · Detachable

Features

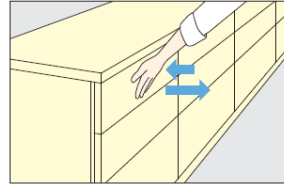
- Under carriage mounting with bracket: Ideal for drawer with limited space
- Full extension (3 members)
- No handle or knobs required for a sleek, modern look
- The drawer is detachable by lifting the lever
- The drawer can be held in the fully closed position

Parts Included

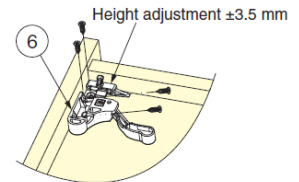
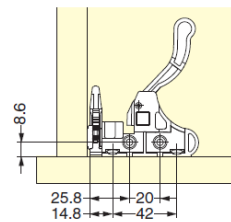
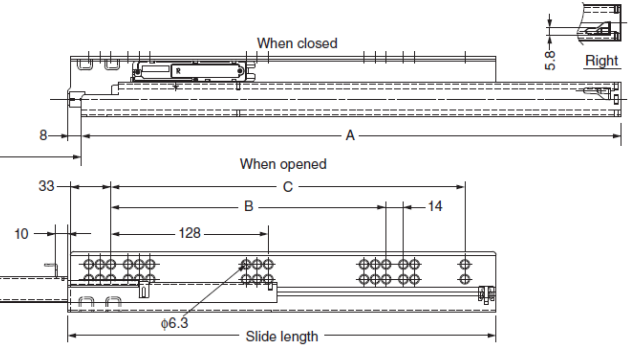
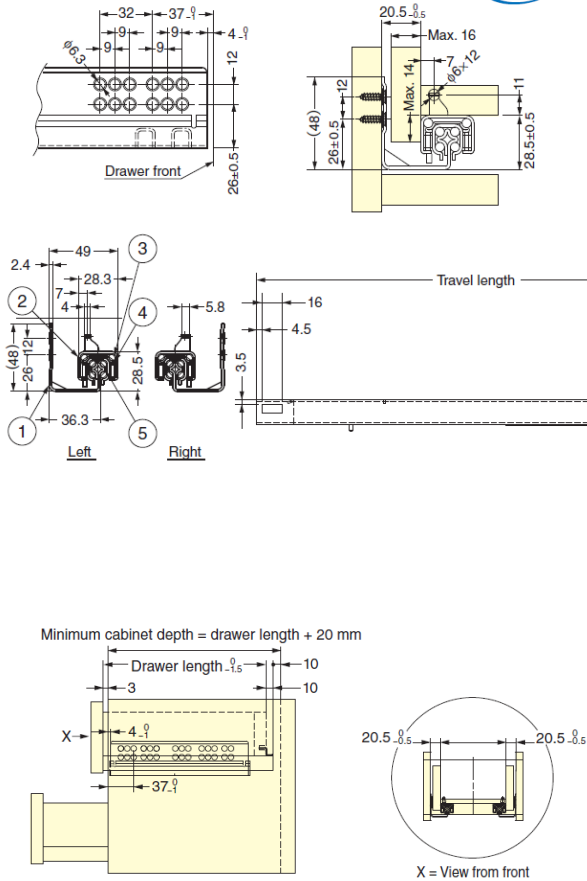
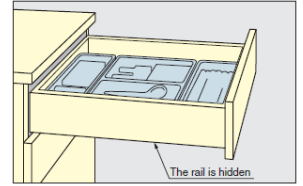
- Countersunk head tapping screw 4 x 15, 3 x 6



Push Open



Full Extension (3 Members)



No.	Part Name	Material	Finish
①	Outer Member	Steel	Zinc Chromate
②	Inner Member	Steel	Zinc Chromate
③	Ball	Steel	—
④	Retainer (Outside)	Polyacetal (POM)	—
⑤	Retainer (Inside)	Polyethylene (PE)	—
⑥	Clip	Polyamide (PA)	—

Sold in pairs

Part No.	Slide Length	Travel Length	A	B	C	Drawer Length	Minimum Cabinet Length	W	Load Capacity (per pair)
G2150-270	181.5	266	255	224	-	260	280	470	196 N 20 kg
G2150-300	206.5	296	285			290	310	500	294 N 30 kg
G2150-350	241.5	346	335			340	360	550	343 N 35 kg
G2150-400	276.5	396	385			390	410	600	392 N 40 kg
G2150-450	311.5	446	435			440	460	650	343 N 35 kg
G2150-500	356.5	496	485			490	510	700	294 N 30 kg
G2150-550	391.5	546	535	288	-	540	560	750	343 N 35 kg
G2150-600	416.5	596	585			590	610	800	294 N 30 kg